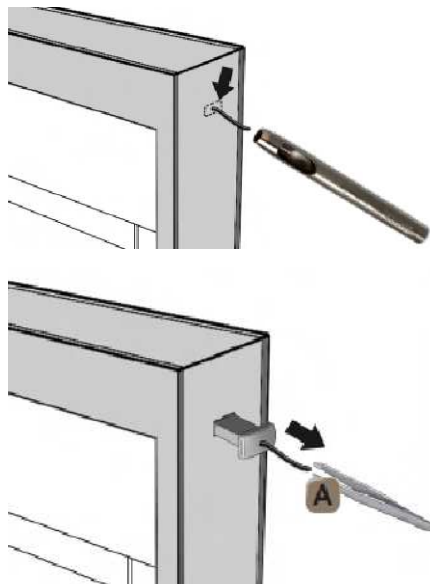


## WIRING

Page 1



1. Carve the sealant around the cap with a cutter.

2. Remove the "A" cap pulling the thread with tweezers.

Page 2



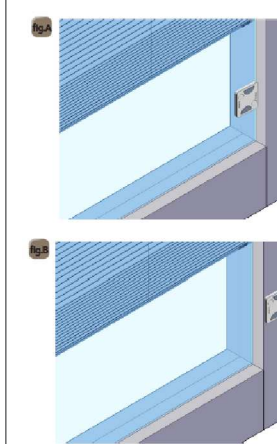
3. Insert the connector in the correct position. 4. Test the correct functioning of the blind as shown in the video, then seal the lid with some silicone.

### CABLE LENGTH, PLEATED/DUETTE/VENETIAN BLIND:

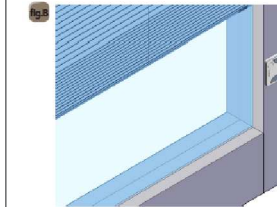
Blind height	Command cable length
up to 1200 mm	1000 mm
1201 - 2000 mm	1500 mm
2001 - 3000 mm	2000 mm

## ATTACHING THE MAGNETIC CONNECTOR

Page 3

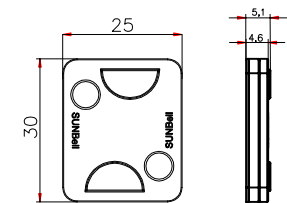


**APPLICATION ON THE GLASS:**  
The glass has to be clean and dry. The application needs to be done at a temperature of 20°C. If the environmental temperature is very low, heat up the glass surface until reaching 20°C. Remove the backing from the connector and apply firm pressure. Firm bonding will be achieved within 72 hours.



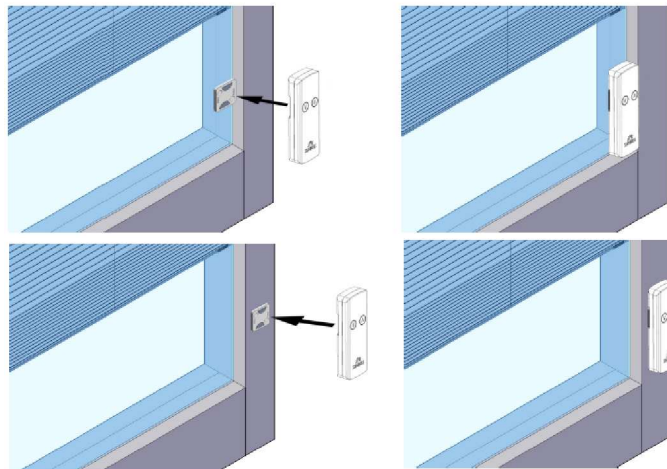
**APPLICATION ON THE FRAME:**  
Drill an 8 mm diameter hole and insert the cable. Remove the plug by pressing the back of the connector to create space for the screw.

### CONNECTOR DIMENSIONS (mm)



Page 4

## RAISING AND LOWERING THE BLINDS



- Fit the actuator onto its base plate and activate the up or down command in order to raise or lower the blind.
- Press once the up or down command in order to raise or lower the blind.
- During the up/down movement press one of the command to stop the blind.
- To tilt the slats, keep one of the button pressed.

Page 5

## RECHARGING THE ACTUATOR



- If the battery needs recharging, the red LED flashes.
- To recharge the battery plug the power supply into a power socket, then plug the micro-USB connector into the port provided. During the charge the orange LED is steadily lit.
- The orange LED turns off when the charging is complete.
- When the blue LED lights up after an UP or DOWN command, the system is running correctly.

**WARNING:** Do not use the actuator when in charge



UNI EN 1279-5:2005 - UNI EN 1279-6:2004 - UNI EN 1379-6:2004 - IMQ EN 55014-2-1997



Via I Maggio 44/46, 25038 Rovato (BS)  
TEL +39 030 7704635 - FAX +39 030 7704607  
[www.sunbell.it](http://www.sunbell.it)



## INSTALLATION

RECHARGEABLE BATTERY ACTUATOR  
FOR RAISING, LOWERING AND TILTING  
FUNCTIONS

Video instructions

